

This document has been produced for professional advisers for discussion with existing investors who are familiar with investment terminology.

# Legal & General Multi-Index 7 Fund

Unit Trust (NURS non-complex) I-Class GBP Acc



## WHAT'S THE STORY?

The majority of asset classes delivered positive performance in the third quarter. Developed government bonds (both nominal and inflation-linked), investment grade credit and other mid-risk assets such as listed global real estate and listed infrastructure benefitted from the collapse in yields across the globe. Trade-war news flow, weaker economic data from China and Germany, and increased concerns about the risk of a recession in the US all played a part. August saw a commonly-watched segment of the US Treasury curve, that between two-year and ten-year yields, inverting, whilst 30-year US yields fell to a record all-time low.

Developed market equities delivered positive returns over the period, with Japanese equities being the standout performer. Eurozone equities also bolstered returns, as the European Central Bank cut short-term interest rates to -0.5%. By contrast, two of the worst-performing asset classes over the quarter were emerging market equities and Asia Pacific ex. Japan equities, as a result of escalating US-China trade tensions.

## FUND MANAGERS



Justin Onuekwusi



Andrzej Pioch



Francis Chua



## PERFORMANCE (%)

12 months to 30 September	2019	2018	2017	2016	2015
Fund	5.04	8.22	13.03	19.93	-2.12

Source: Lipper, LGIM as at 30 September 2019. Total Return net of tax and charges. I-Class GBP Accumulation. Please remember, the value of investments and any income from them may fall as well as rise and you may get back less than you invest. **Past performance is not a guide to future performance.**

## FUND REVIEW

The Multi-Index 7 Fund delivered a positive return over the period. The main positive contributions to performance came from UK, US and Japanese equities. These were somewhat offset by our holding in emerging market equities, which detracted from the quarter's gains.

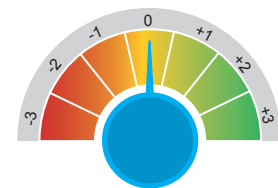
In terms of positioning we increased our exposure to UK mid-cap stocks on the back of improving valuations relative to large-caps. Additionally, we closed our US energy equities and Mexican stocks positions due to the strong performance of Mexico versus global emerging markets, particularly those with strong ties to China; moving back to neutral on energy stocks.

## OUTLOOK

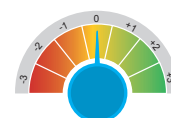
Recently, our overall stance on 'risk assets' was dialled down to neutral; reflecting a darkening economic outlook. Corporate profit margins have fallen and the corporate-financing gap is flashing red. The US Treasury yield curve is also in the 'danger zone', as it inverted in August between the two-year and 10-year points - historically a good predictor of recession, albeit not always.

While the majority of our recession indicators remain in neutral territory, around one-third of them now show warning signals and only one out of 20 remains as a positive signal: US households are in great shape, served by the decrease in US interest rates. The latter gives some comfort, as consumer strength may be able to offset weakness elsewhere.

Our recession probabilities for the coming year have increased, mainly due to trade-war concerns. The alarm may be temporary, as predicting Trump's next move is obviously very difficult. An easing of trade-war concerns would probably see recession probabilities decline and equity prices rise. However, at least part of the trade-war impact will likely stick longer term in the US. The uncertainty emanating from Trump's erratic trade policy will remain, making us less willing to buy equities during market dips.



## CORE VIEW ON RISK ASSETS NEUTRAL OVERALL



### Economic cycle

Economy is in late cycle and recession risks have increased



### Valuations

Risk asset valuations are not excessive



### Systemic risk

Material geopolitical risks balanced with an improving outlook on China and global debt levels



**RISK PROFILE CONFIRMATION STATEMENT**

The Risk Profile Volatility Band data is supplied by Distribution Technology. Although this product has been designed with Distribution Technology's Dynamic Planner model in mind – and these are the risk ratings we specifically target – the portfolios can be risk-mapped to different risk profilers. Distribution Technology has assessed the Legal & General Multi-Index 7 Fund and their analysis has indicated that the fund has remained in line with the fund risk profile 7 (as at 30 June 2019). ^Expected volatility (as at 30 September 2019) as calculated by LGIM using data provided by Distribution Technology.

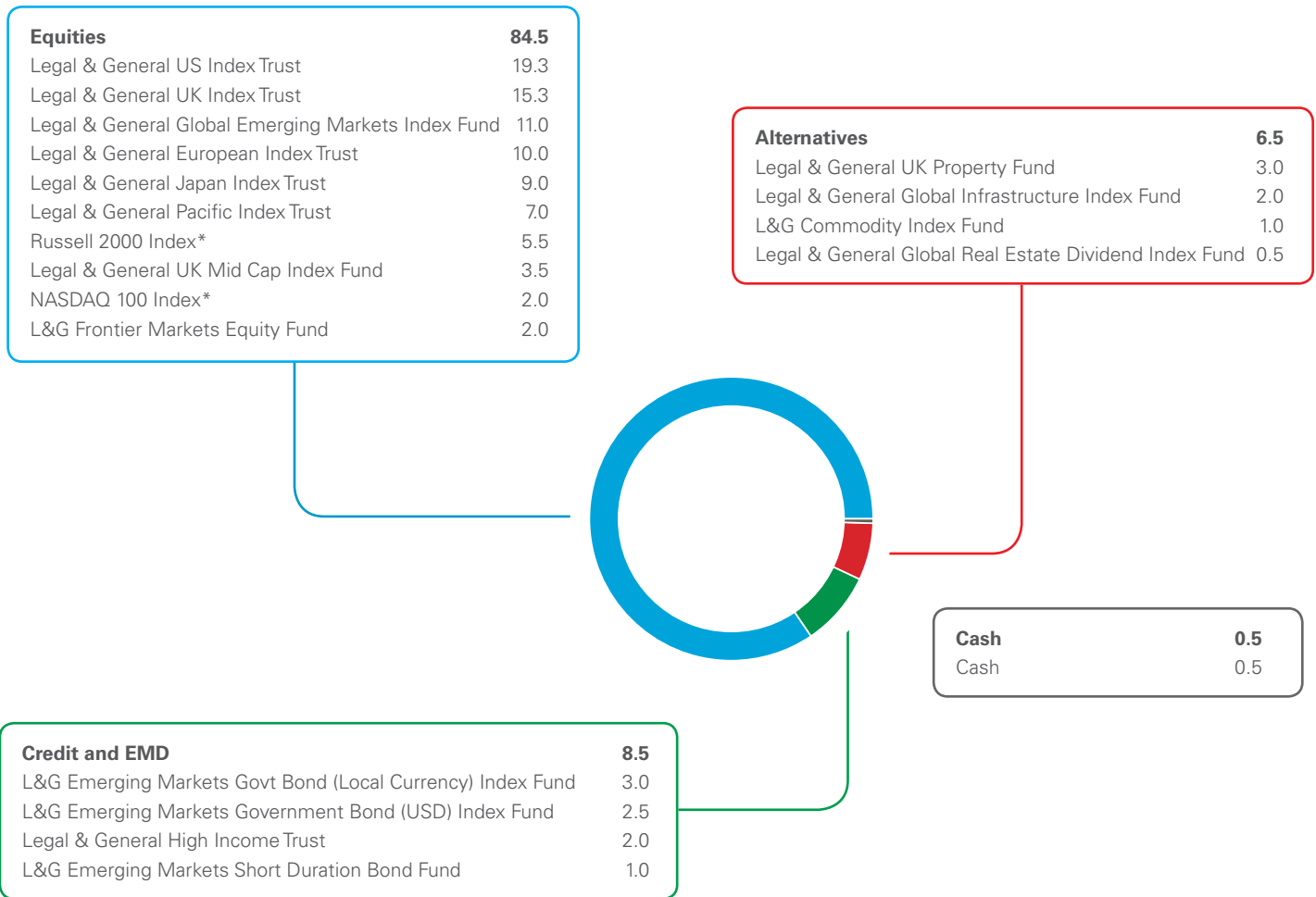
Multi-Index Fund range	DT risk profile volatility band	Expected volatility^
7	12.6 – 14.7	14.0
6	10.5 – 12.6	12.0
5	8.4 – 10.5	9.8
4	6.3 – 8.4	8.0
3	4.2 – 6.3	5.9

↑ Higher risk  
↓ Lower risk

**TARGET ASSET ALLOCATION BREAKDOWN**

All data source LGIM unless otherwise stated. Totals may not sum due to rounding. As at 30 September 2019.

\*Implemented through futures



**TO FIND OUT MORE**

Call **0345 070 8584**  
Charges may vary

Email **fundsales@lgim.com**

Visit **www.lgim.com/multi-index**

**Important information**

This is not a consumer advertisement. It is intended for professional financial advisers and should not be relied upon by private investors or any other persons. The views expressed within this document are those of Legal & General Investment Management Limited, who may or may not have acted upon them. Legal & General Investment Management Limited is and regulated by the Financial Conduct Authority and is the Investment Adviser to the Legal & General Multi-Index funds, UK authorised unit trusts. The value of investments and any income from them may fall as well as rise, and investors may get back less than they invest. Past performance is not a guide to future performance. Exchange rate changes may cause the value of any overseas investments to rise or fall. Multi-Index funds are sensitive to interest rate changes. At times, especially over shorter timescales, lower risk-profiled funds may fall in value by more than higher risk-profiled funds. An increase in medium to long-term interest rates is likely to reduce the value of an investment in these funds. The funds invest in riskier bonds, known as sub-investment grade bonds. These bonds pay higher interest rates to try to provide more attractive income returns. The value of property is generally a matter of valuer's opinion rather than fact. Details of the specific and general risks associated with the funds mentioned are contained in the Key Investor Information document(s). Legal & General (Unit Trust Managers) Limited. Authorised and regulated by the Financial Conduct Authority.

© 2019 Legal & General Investment Management. All rights reserved. No part of this document may be reproduced in whole or in part without the prior written consent of Legal & General Investment Management.